

Translation of the original operating instructions

VETTER Dual Decon-Shower 0.5 bar (7.25 psi)

Article No. 1513009700



Contents

1. Important preliminary remarks	2
2. Description of the product	2
2.1 Scope of delivery	2
2.2 Optional accessories	2
2.3 Correct handling and usage	2
2.4 Safety instructions	3
3. Preparing the product for use	3
3.1 Preparations for operation	3
4. Operating Instructions	3
4.1 Operation with blower (see operating instructions blower) ..	3
4.2 Operation with compressed air	4
4.3 Use as decontamination tent	4
4.4 Instructions of the showers	7
4.5 Deflation	7
4.6 Folding Plan	8
5. Practical Tips	9
6. Storage	9
7. Repeated Inspections	10
8. Repair Instructions	10
9. Technical data	11

1. Important preliminary remarks

These instructions must be read carefully and complied with at all times to ensure this product is used properly and as intended, to ensure this product provides the greatest possible benefit, and that the entitlements within the scope of the Vetter warranty are preserved.

Each use/operation of the dual decon-shower requires detailed knowledge and compliance of these instructions.

The operating instructions given here are to be regarded as part of the product and are to be kept for the complete life duration of the product. In case the product should be passed on to a successive user then the operating instructions must also be included

2. Description of the product

2.1 Scope of delivery

Article No.	Description	Quantity
1513009700	Set Dual Decon-Shower, consisting of:	1
1513009300	Stiffening frame for Dual Decon-Shower	1
1513009500	Main tub for Dual Decon-Shower	1
1513009600	Ahead tub for Dual Decon-Shower	1
1513009400	Shower liner with gloves and window	1
1510017700	Shower hose	1
1510001700	Decon hand-shower-unit	2
1510014700	Decon hand-shower-unit with quick-stop function	2
0050004500	Set repair material	1
1520002400	Peg 30 cm (11 inch) long	6
1520002500	Pouch, red for pegs	1
1520004200	Valise 110 x 85 x 40 cm (43 x 33 x 16 inch)	1
1523006800	Hammer	1

2.2 Optional accessories

Article No.	Description
1523003700	Valise for Dual Decon-Shower, 265 x 150 cm (104 x 59 inch), yellow, Incl. auto belt latch
1520039000	Floor grate for shower basins, 50 x 50 x 5 cm (19 x 19 x 1,9 inch), grey

2.3 Correct handling and usage

Always use compressed air with the dual decon-shower - never ever use flammable or aggressive gases. Only Vetter original fittings and parts may be used for the dual decon-shower.

2.4 Safety instructions

Only trained, reliable, and responsible employees are permitted to use and operate this product. Wear the required protective gear and clothing. Please contact the manufacturer or authorized retailer when detecting cracks, fissures, holes, or leakages on the pneumatic supporting frame during the product inspection. Such defects can lead to bursting. Always avoid contact with hot or sharp-edged materials.

Due to the light design of the pneumatic tents, it is possible that heavy winds may cause stability problems.



Always fasten tents with anchoring ropes or use ballast containers.

3. Preparing the product for use

3.1 Preparations for operation

Inspect the dual decon-shower before and after each operation to ensure correct and perfect condition. It is imperative that the recommended folding instructions be observed.

4. Operating Instructions

Open the packing cover. Lay out the tent at the required location. The ground area must be free of any sharp-edged or pointed objects! The dual decon-showers are designed to be inflated with a blower or with compressed air.

4.1 Operation with blower (see operating instructions blower)

The inflation connection for blowers is opened when air flows through. Connect the inflation hose of the blower to the inflation connection of the shower. Make certain there is perfect locking of the couplings of the inflation hose with the shower coupling and the blower.

Start the blower and fill the shower until the maximum permitted operating pressure of 0.5 bar/7.25 psi. The dual decon shower erects automatically. The safety valve integrated into the support frame avoids over-inflation (greater than 0.5 bar/7.25 psi). As soon as you can hear the safety valve actuating, the filling can be ended. To do this, switch off the blower fan, separate the filling hose from the fill connection and re-secure the cap (by turning clockwise).

Note! Should parts of the support frame become caught up during erection then switch off the blower immediately and rectify the problem. Inflation can then be continued after doing this.



e.g. Tent blower 0.14-0.4 bar 230 V
(Art. no. 1523017700)



4.2 Operation with compressed air

Connect the pressure regulator with the knurled wheel on the compressed air bottle. Close the hand valve (3) of the pressure regulator. Open the hand wheel on the compressed air cylinder (5) slowly. The manometer (1) indicates the pressure in the bottle. Adjust the back-pressure to approximately 10 bar using the adjustment wheel (4). The set pressure can be checked on the back-pressure manometer (2).

Connect the air hose of the pressure regulator (6) with the brass coupling (7) of the inflation connection.

Open the the hand valve (3) of the pressure regulator and start inflation. Observe the shower during the inflation process. The dual decon shower erects automatically. The safety valve integrated into the support frame avoids over-inflation (greater than 0.5 bar/7.25 psi). As soon as you can hear the safety valve actuating, the filling can be ended. Close the hand-wheel (5) of the compressed air cylinder for this purpose. Now the filling hose can be separated from the filling connection.

Note! If, during erection of the dual decon shower, parts of the tent frame become caught up in the tent cover, then close the valve on the pressure regulator immediately and rectify the cause of the problem. After doing this, the inflation process can be continued.



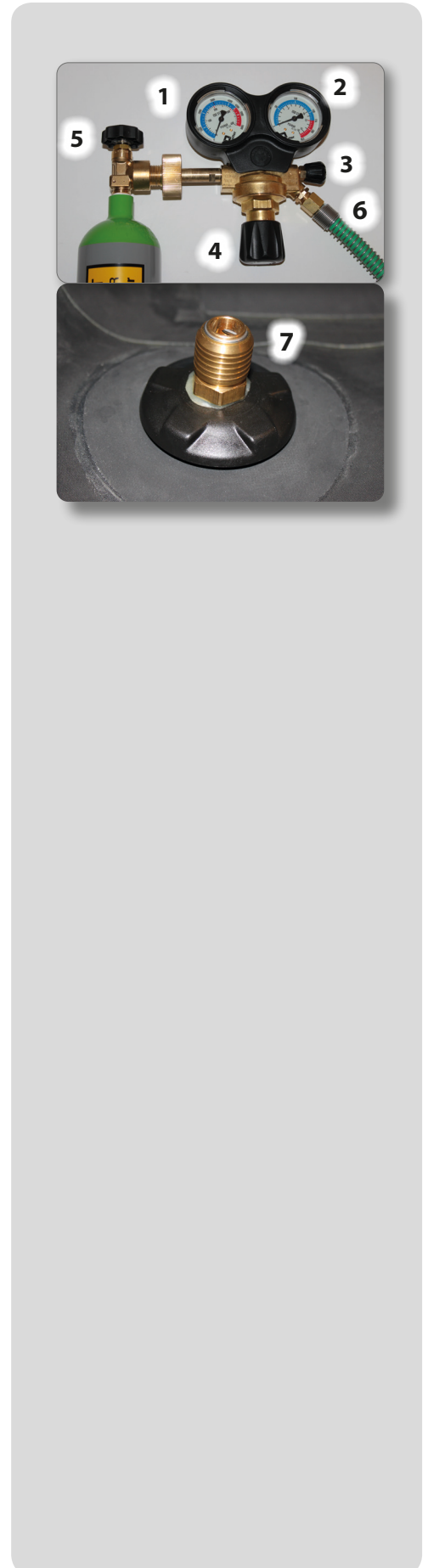
4.3 Use as decontamination tent



The water connection for the shower heads and the hand showers are two blue supply hoses with a Storz Coupling Size D for water.

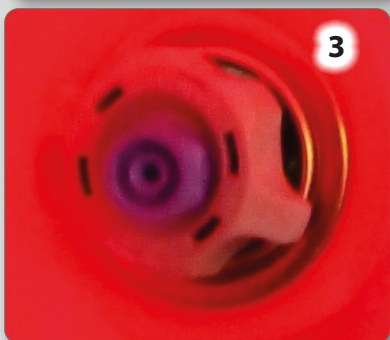
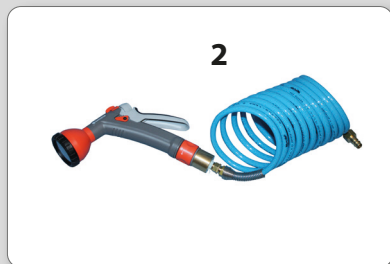


The air filling connection is positioned outside at the pneumatic frame.



The entire unit is designed to allow at least two (or max. four) fire fighters

wearing Chemical Protection Suits (CPS) to go parallel together (at the same time) through the decontamination process in order to support each other and in order to save time which is limited under Breathing Apparatus (BA) / Chemical Protection Suits (CPS).



ENTRANCE:

The Dual Decontamination-Shower has an interior size of 2 x 3 m / 6 x 9 ft. (width x length).

- ✓ The first section with side large windows and integrated gloves gives e.g. the option for pre-cleaning of boots or suits with hand showers (1) and decon spray showers (2) with support from outside.
- ✓ The second section with small side windows has 8 shower heads (3) inside to apply either pure water or also decontamination detergent onto the Fire fighters CPS.



EXIT:

When you step out of the Decon-Shower, there is an inflatable tubular framed "basin" area of 2 x 2 m (6 x 6 ft.) attached to the tent. This section is for example meant to drop off the Chemical Protection Suit to be stored in separate plastic bags. This section is also meant to keep the spill of water in the external basin.

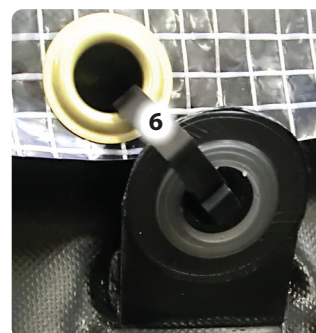


4.4 Instructions of the showers

The right hand side ball valve (1) is to shut on/off the water for the first section (hand held brushes + hand held sprinklers).

The left hand side ball valve (2) is to shut on/off the water for the second section (8 pre-fixed shower heads (3)).

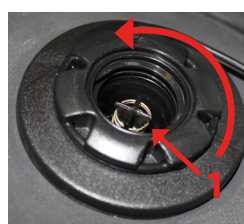
In order to change the shower curtains the hand showers (4) must firstly be uncoupled and the rubber washers (5) removed. The shower curtain can now be removed by separating the Velcro and pile fabric connections on the vertical support hose and unhooking the eyelets (6) on the insertion basin.



The colour is different.

4.5 Deflation

The deflation of the support frame happens over the inflation connection. To deflate the tent, close the air source (compressed air cylinder, etc.) and disconnect the pressure reducer or the filling hose of the blower. The deflation valve is opened by pressing-in and turning the pin (1) counter clockwise.



Pin before locking

Pressing-in + turning

Valve open

Fold the tent in the way, that the air can escape (Folding to the direction of the inflation connection). Residual emptying can be carried out with the aid of a vacuum adapter (Art. No.: 1600016301).

To do this, screw the vacuum adapter (black filling connection) into the vent valve (not into the brass coupling). Connect the quick-action coupling to the connection hose of the pressure reducer. Slowly open the hand wheel of the pressure reducer. Inlet pressure max. 6 bar, optimum 4 bar.

It is also possible to deflate the support frame with a blower with deflate function. Follow the operating instructions of the blower.



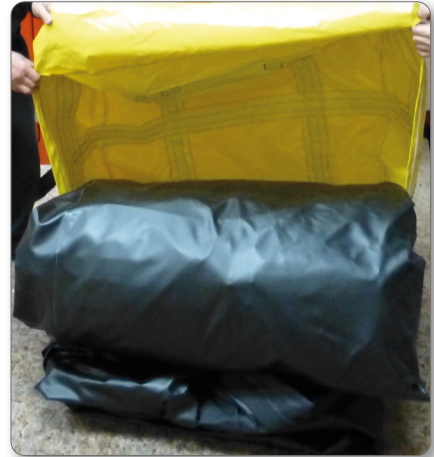
After deflation and before packing, the valve must be unlocked again in order to guarantee perfect inflation when it is next used!



4.6 Folding Plan

Before repacking, the tent frame and the frame of the shower must be completely empty.





5. Practical Tips

- ✓ The individual separating walls, floor tarps, as well as the tent tarpaulins are removed easily and quickly if and as needed. Hook and loop fasteners are used to attach the tarpaulin to the pneumatic supporting frame.
- ✓ If needed, lights can be attached to the loops at the supporting frame /roof section.
- ✓ Ensure that only waterproof /protected lamps are used.
- ✓ After use, clean the tent with a mild cleanser before packing. Allow the parts to dry at normal room temperature. Treat outer surfaces with commercially available impregnating agents.
- ✓ Follow the instructions of the folding plan to fold and pack the tent. Make sure that the tent is folded and packed in an orderly manner and as instructed to ensure the tent is easy to unpack next time it is needed.

6. Storage

When stored and handled properly, the properties of rubber products remain nearly constant for a long period of time. However when handled improperly and under unfavourable storage conditions, their physical properties and/or service life are shortened!



Please comply with the following storage conditions:

Store in a place that is cool, dry, dust-free and moderately ventilated.

The storage temperature should be approx. 15 °C; never let it exceed 25 °C.

The temperature should also not fall below -10 °C.

If there are heating appliances and heating conductors in the storage room, they must be appropriately insulated so that the temperature of 25 °C is not exceeded. Maintain a minimum clearance between the heating appliances and the stored goods of 1 m.

Do not store rubber products in moist storage rooms. The relative humidity should be less than 65 %.

Protect the rubber products from light (direct exposure to sunlight, artificial light with high proportion of UV). The windows in the storage room need to be correspondingly darkened.

Make sure that the storage room does not contain any appliances that cause ozone.

The storage room must be free of solvents, fuels, lubricants, chemicals, acids, etc.

Store rubber products without pressure, tensile stress or similar distortions since that can promote deformations or crack development.

Some metals such as copper and manganese can also have a damaging effect on rubber products.

For more information please refer to DIN 7716.

7. Repeated Inspections

The tents and their accessories should be subjected to a visual and functional inspection by a trained technician before and after each use but at least once a year. This requires inflating the tent to approx. 50 % of the max. working pressure. Check all pressurized parts for fissures, cracks, cuts, puncture holes, detached spots, and heat or chemical damage. If the pressure does not experience a significant drop within one hour, the tent is ready for use.

Please contact the manufacturer in case of larger damage or if you have any questions.

8. Repair Instructions

Minor damage such as cracks, cuts, or punctures (max. 4 cm/1.5 inch) can be repaired by the operator with the enclosed repair kit. Please follow these steps:

1. Select the size of the patch so that the patch extends approx. 4 cm (1.5 inch) beyond the damaged area on all sides.
2. Mark patch area on the supporting frame.
3. Roughen the area of the patch on the surface of the supporting frame as well as one side of the patch.
4. Apply a thin layer of the special adhesive to the roughened spot on the supporting frame and the roughened side of the patch.
5. Allow special adhesive to dry for approx. 10-15 minutes until no longer sticky.
6. Press patch firmly onto the pretreated area of the supporting frame and smooth out.
7. Allow unpressurized supporting frame to rest for at least 48 hours.

Only the factory is able to repair damage that is more extensive.

A trained technician must check the tent and its supporting frame for leaks after the repairs.

9. Technical data

Type	Dual Decon-Shower	
Article No. (Set)		1513009700
Cabin size, interior (L X W)	m	3 x 2
	ft.	9 x 6
Internal height, min. (left/right side)	m	2.07
	ft.	6.8
Additional tub, interior (L X W)	m	2 x 2
	ft.	6 x 6
Max. Inflation pressure (air)	bar	0.5
	psi	7.25
Test pressure	bar	0.65
	psi	9.4
Air requirement	l	2000
	cu.ft.	70
Inflation time ca.	sec	150
Water pressure supply	bar	3 - 6
	psi	43.5 - 87
Water consumption	l/min.	approx. 25 l (shower) + 10 l (for hand-held waterbrush/sprinkler)
	cu.ft./min.	approx. 0.9 cu.ft. (shower) + 0.4 cu.ft. (for hand-held waterbrush/sprinkler)
Pack size (zipper valise) (L x W x H)	cm	110 x 85 x 40
	inch	43 x 33 x 16
Weight, Set, approx.	kg	71
	lbs	157

All rights reserved for technical changes within the scope of product improvement.

Place your trust in emergency pneumatics!

We are the company who can help you, find a solution to your problem!

Vetter GmbH

A Unit of IDEX Corporation

Sales

Blatzheimer Str. 10 - 12
D-53909 Zülpich
Germany

Tel.: +49 (0) 22 52 / 30 08-0
Fax: +49 (0) 22 52 / 30 08-590
Mail: vetter.rescue@idexcorp.com

www.vetter.de